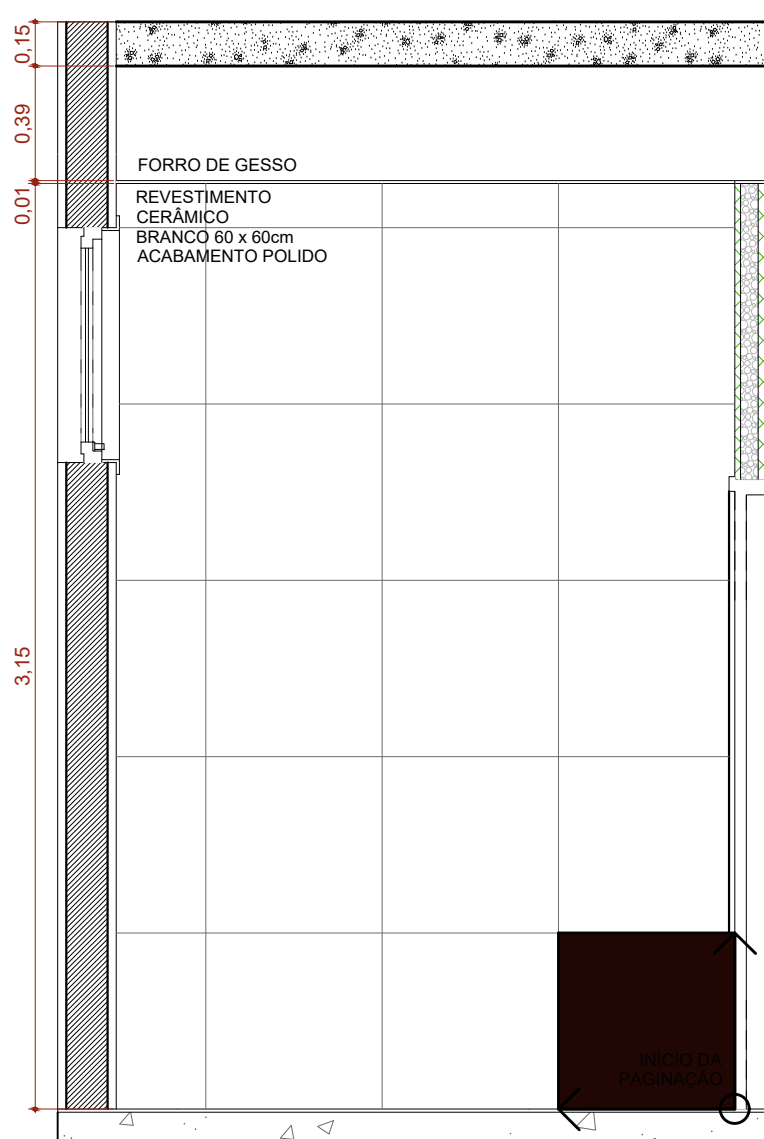
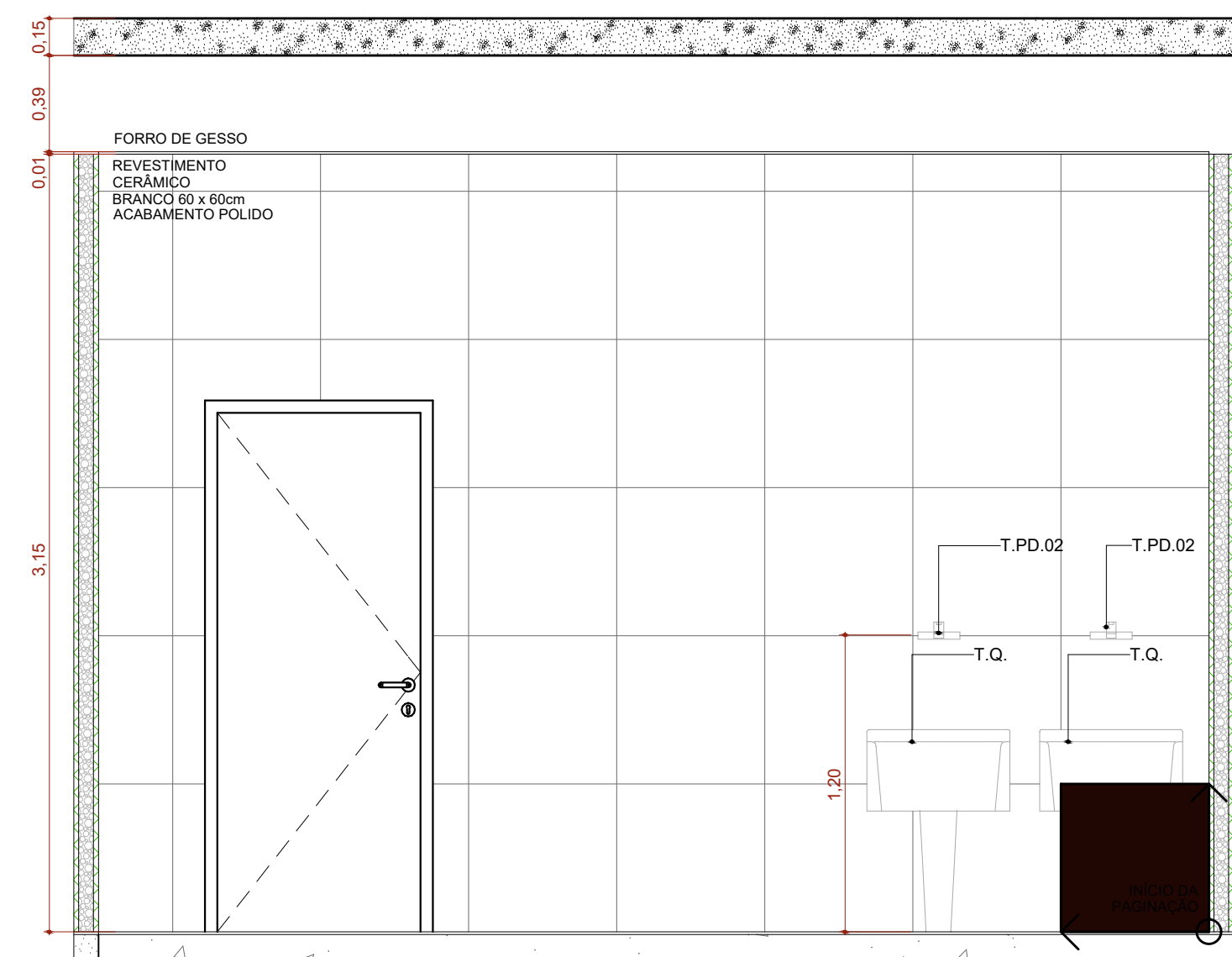


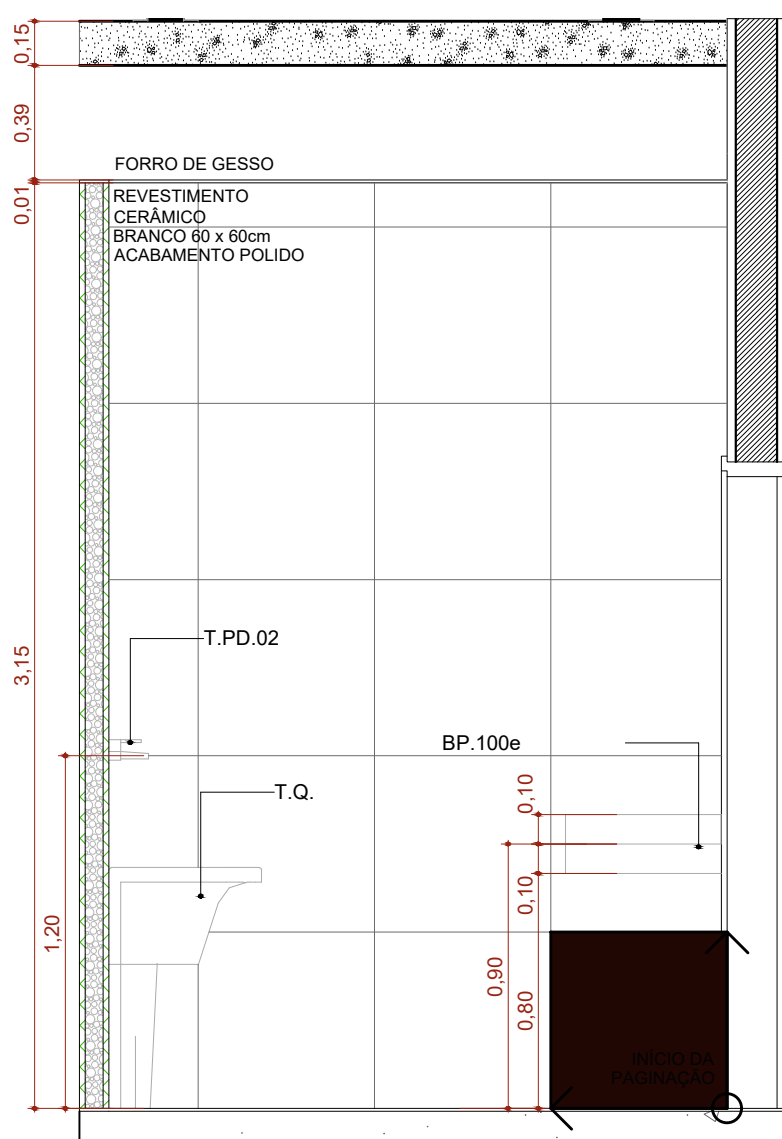
A.M.09 Sala para lavagem de roupas
Escala: 1:25



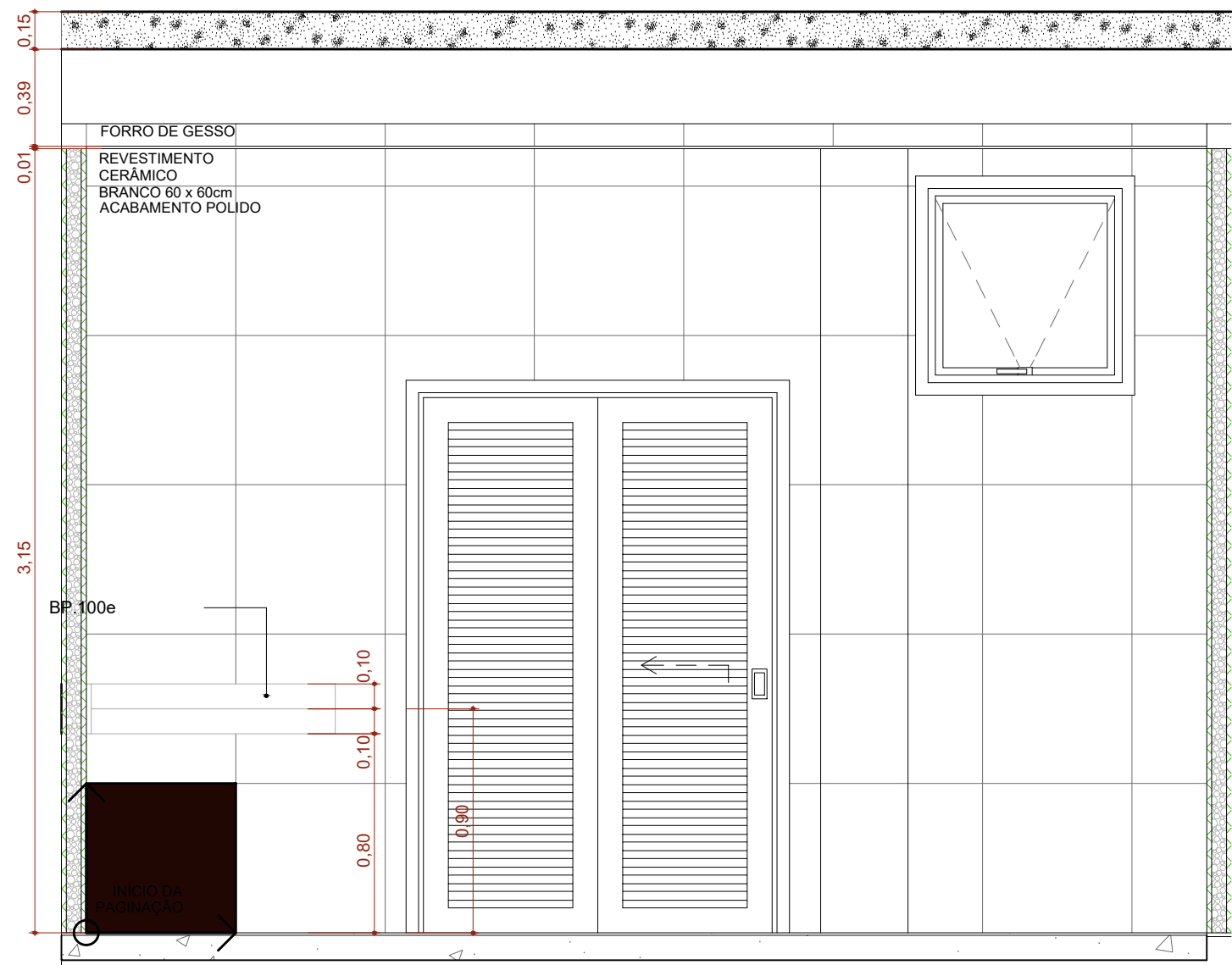
A.M.09 VISTA 01
Escala: 1:25



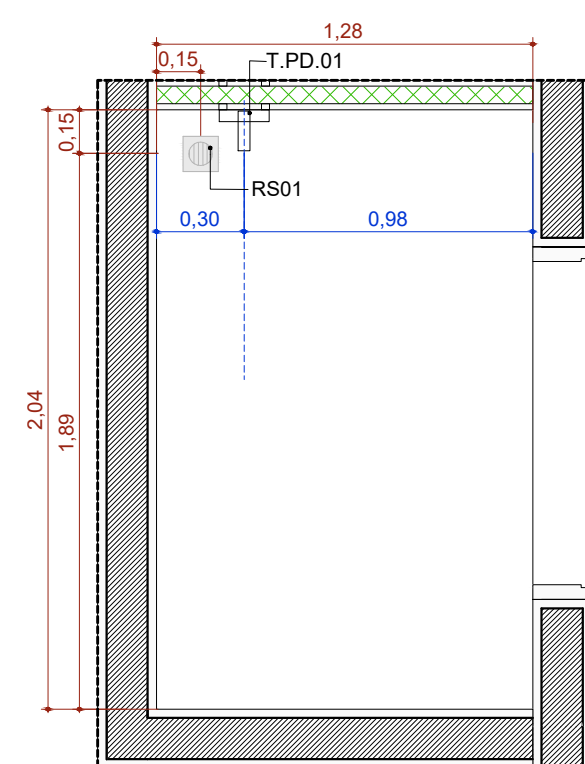
A.M.09 VISTA 02
Escala: 1:25



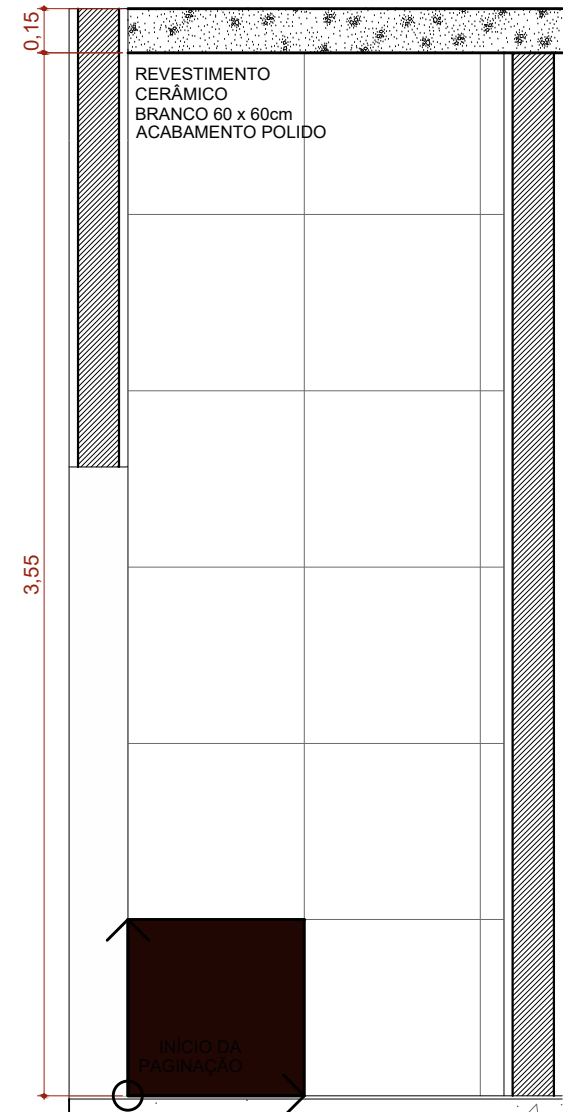
A.M.09 VISTA 03
Escala: 1:25



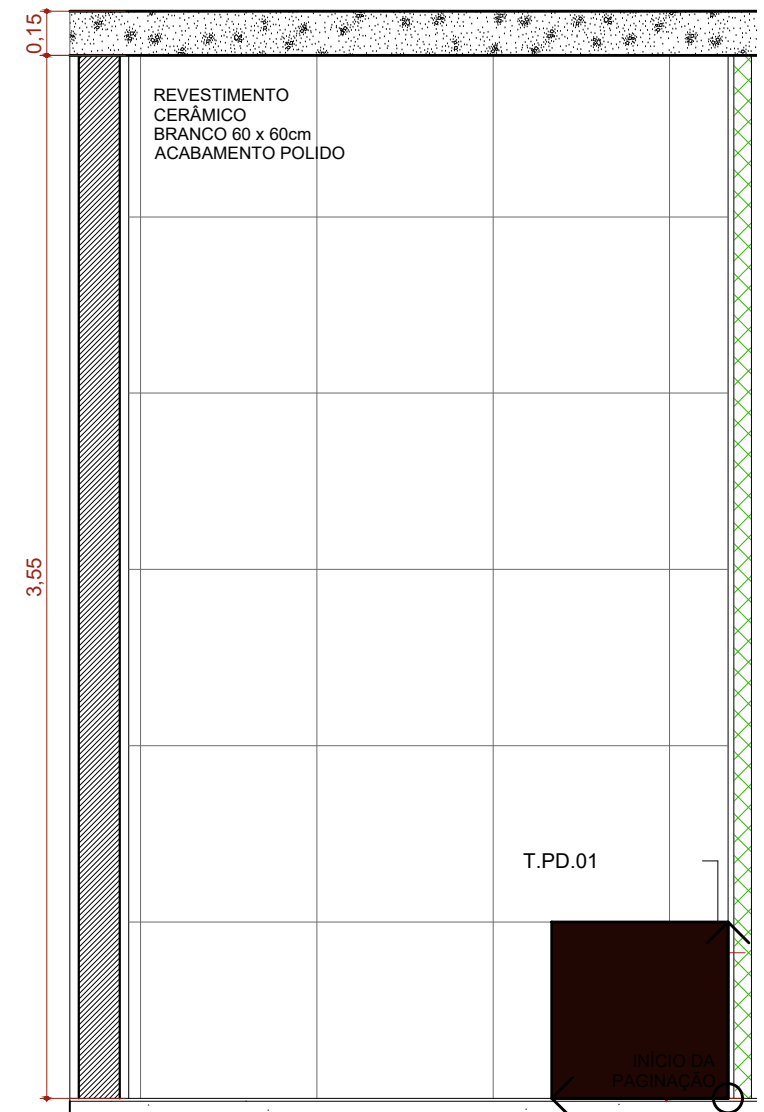
A.M.09 VISTA 04
Escala: 1:25



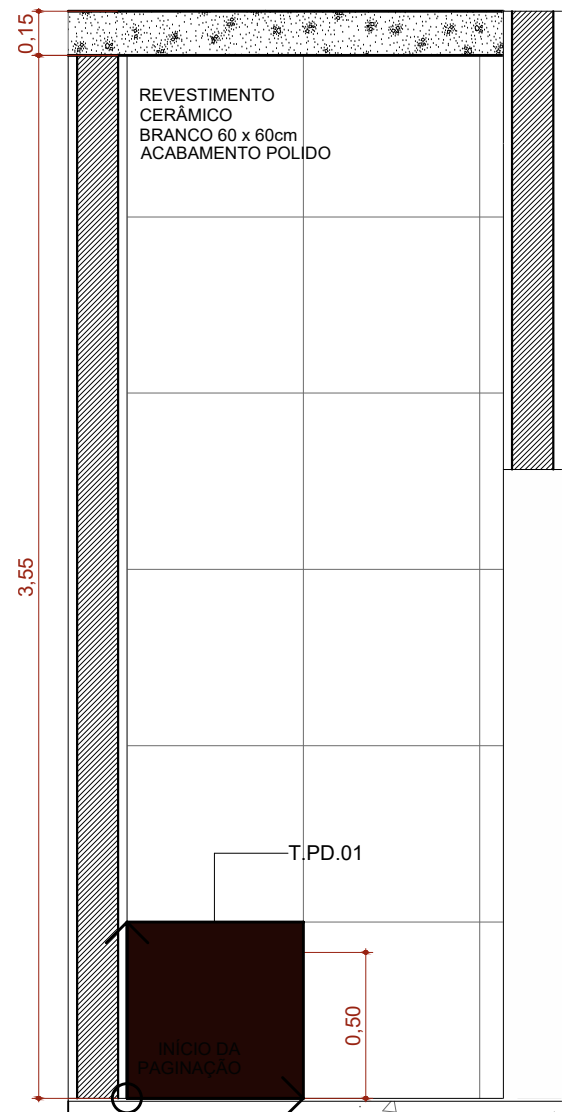
A.M.10 Abrigo de Reíduos Contaminados (Grupo A e E)
Escala: 1:25



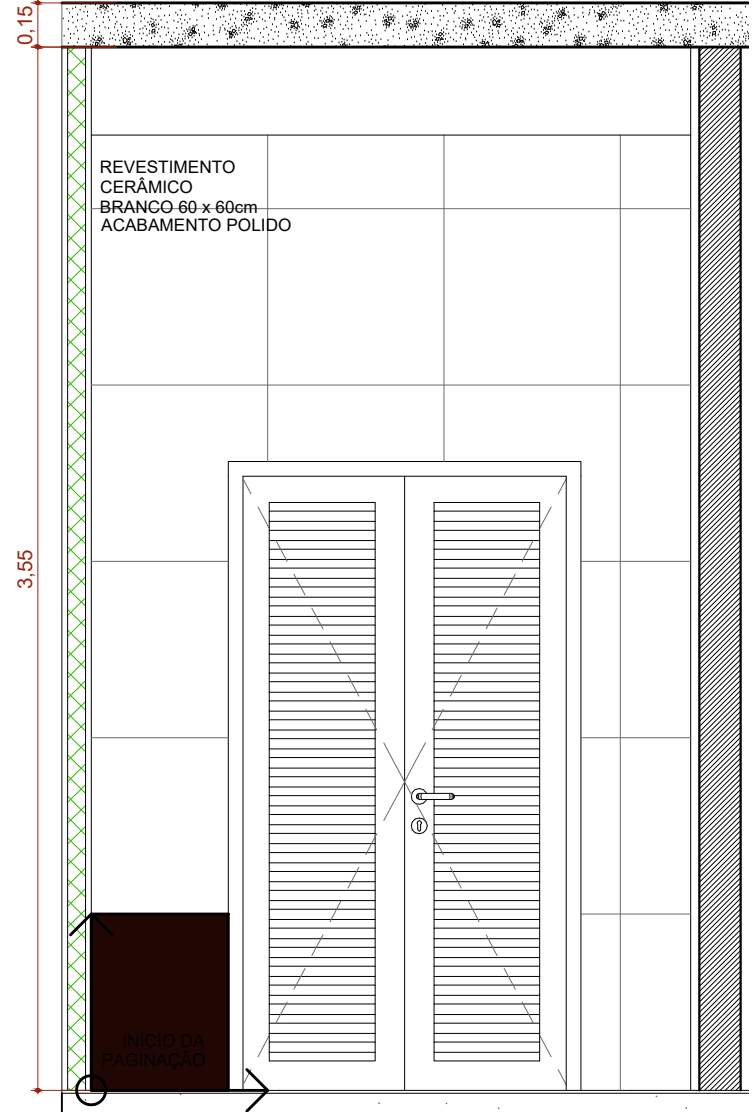
A.M.10 VISTA 01
Escala: 1:25



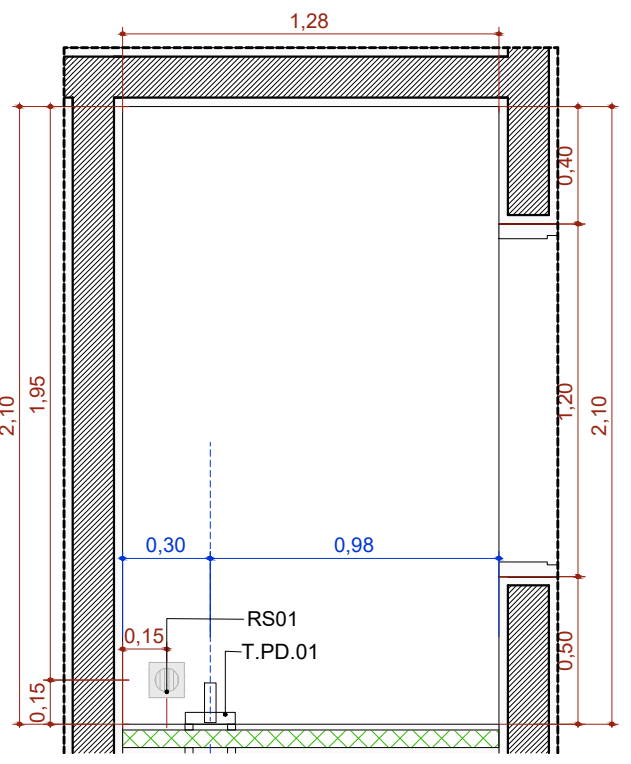
A.M.10 VISTA 02
Escala: 1:25



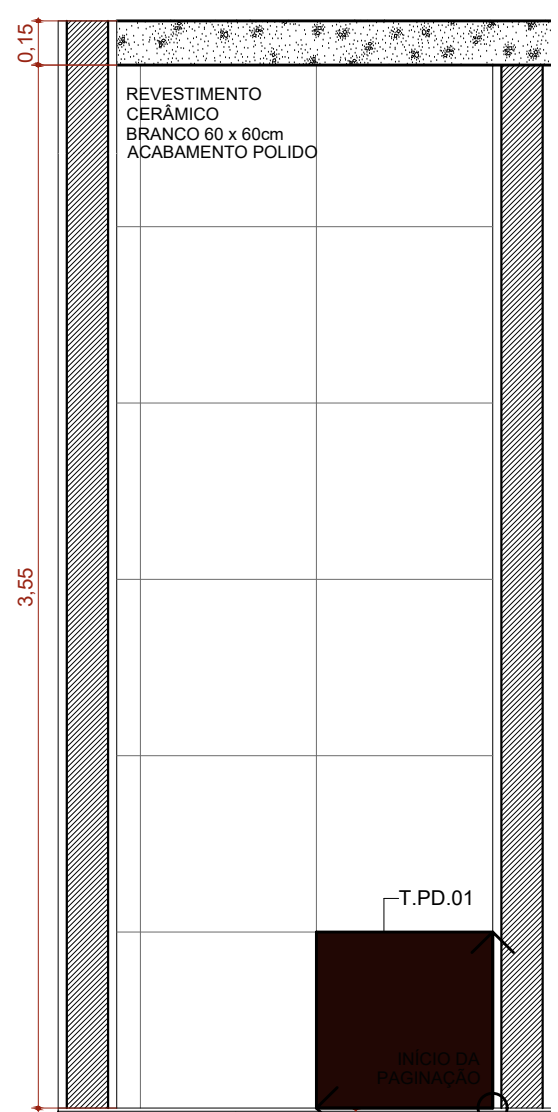
A.M.10 VISTA 03
Escala: 1:25



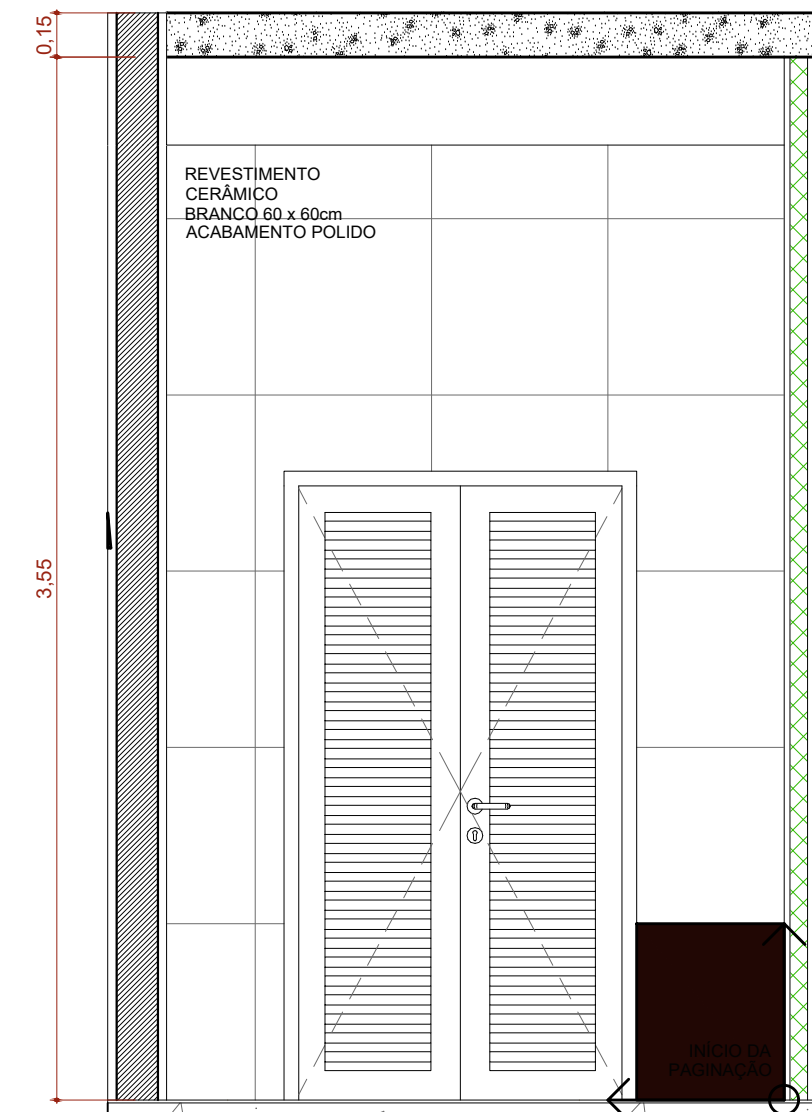
A.M.10 VISTA 04
Escala: 1:25



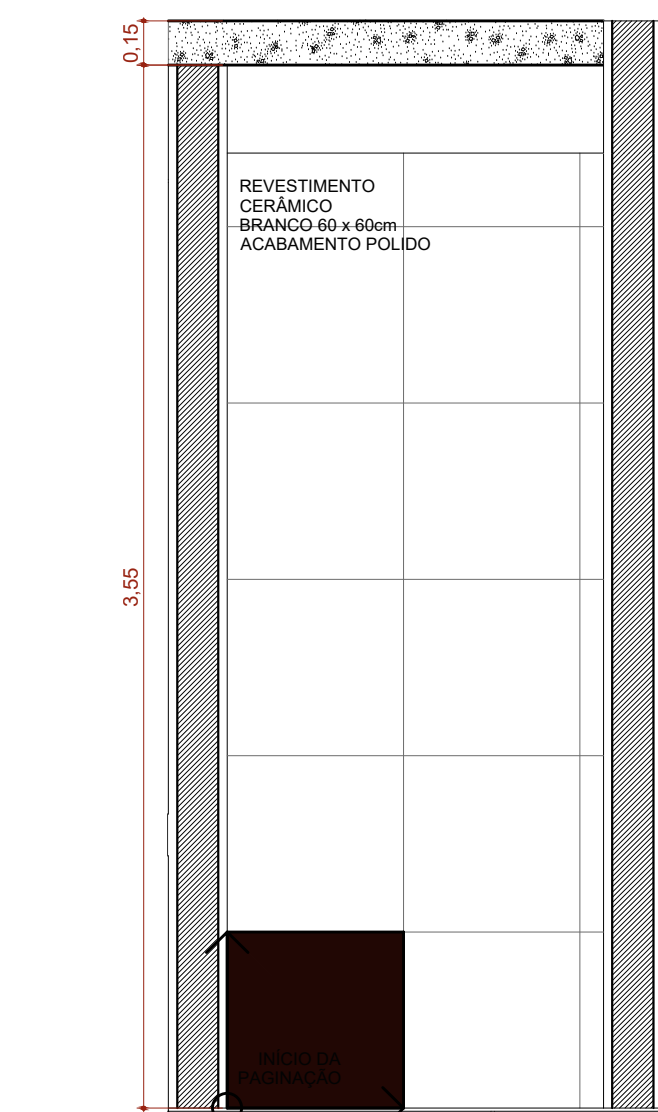
A.M.11 Abrigo de Reíduos comuns (Grupo D)
Escala: 1:25



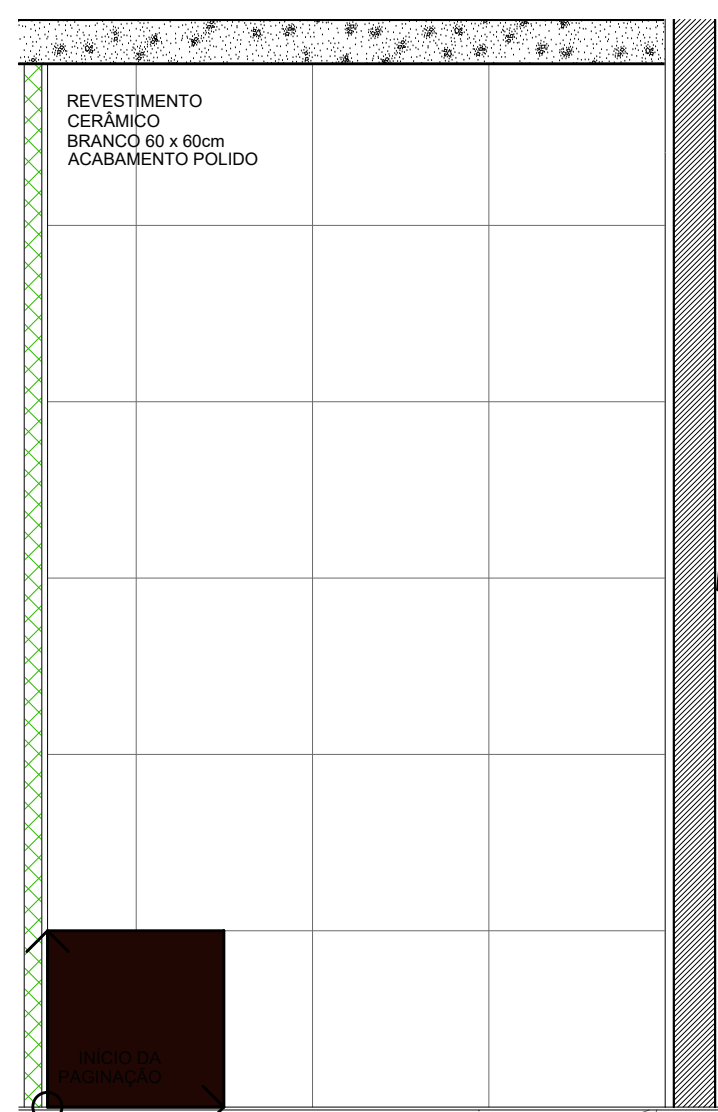
A.M.11 VISTA 01
Escala: 1:25



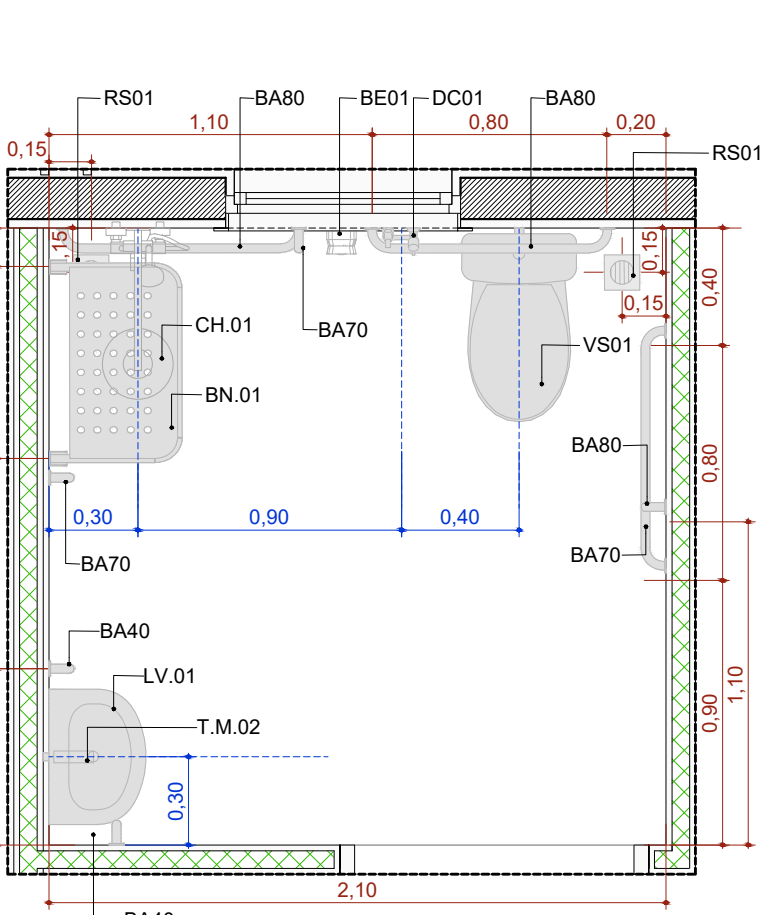
A.M.11 VISTA 02
Escala: 1:25



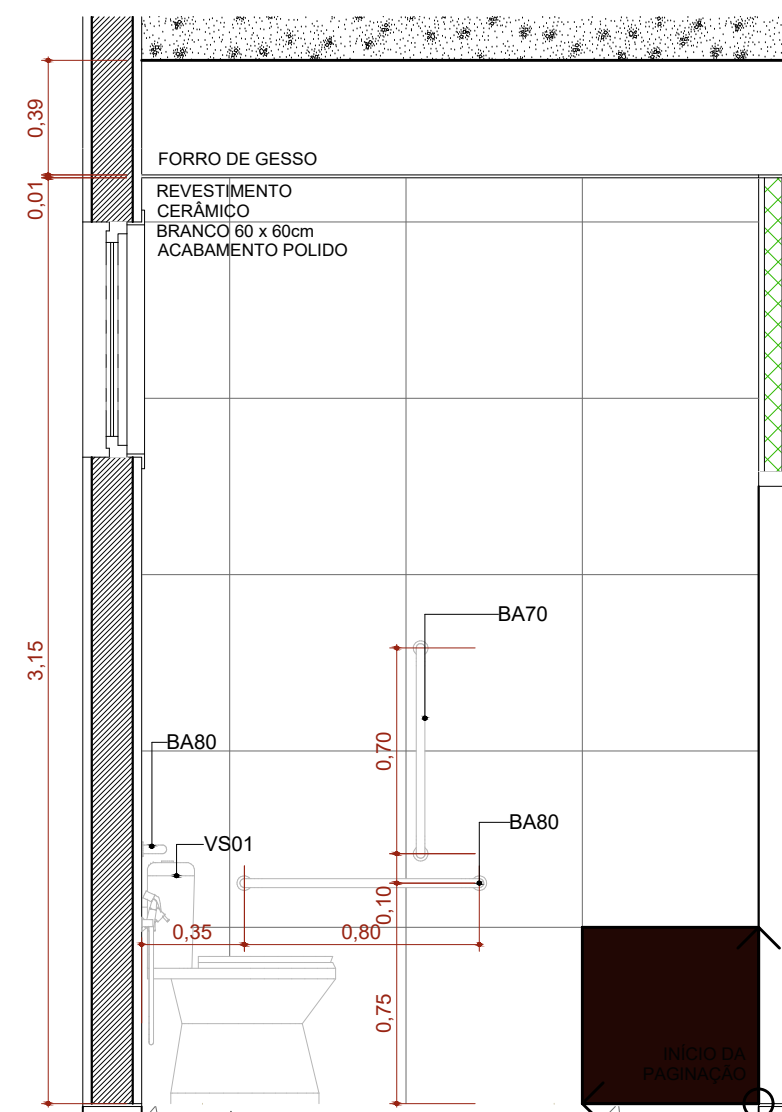
A.M.11 VISTA 03
Escala: 1:25



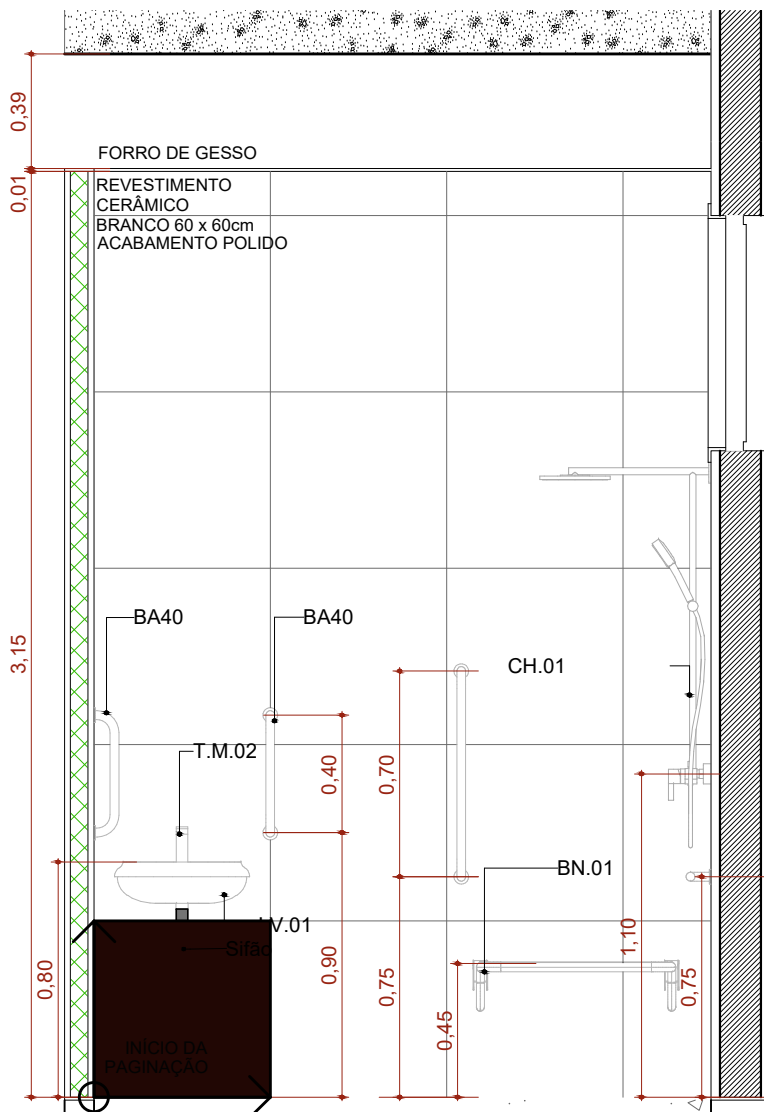
A.M.11 VISTA 04
Escala: 1:25



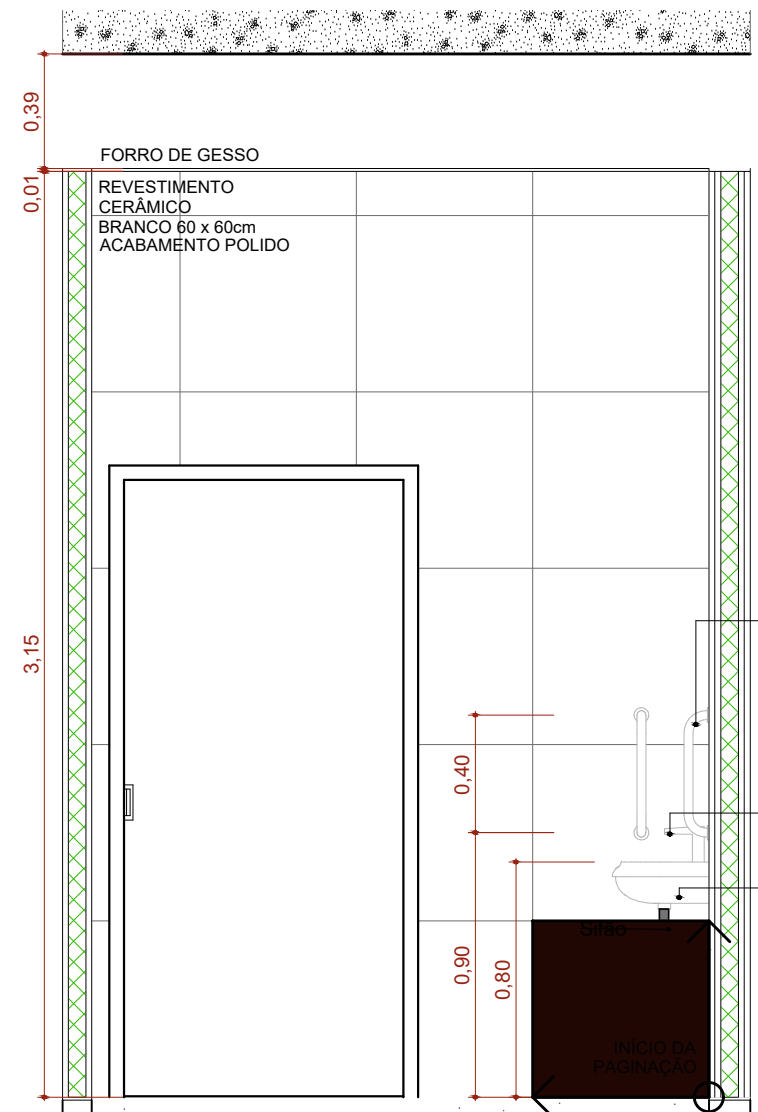
A.M.12 Banheiro
Escala: 1:25



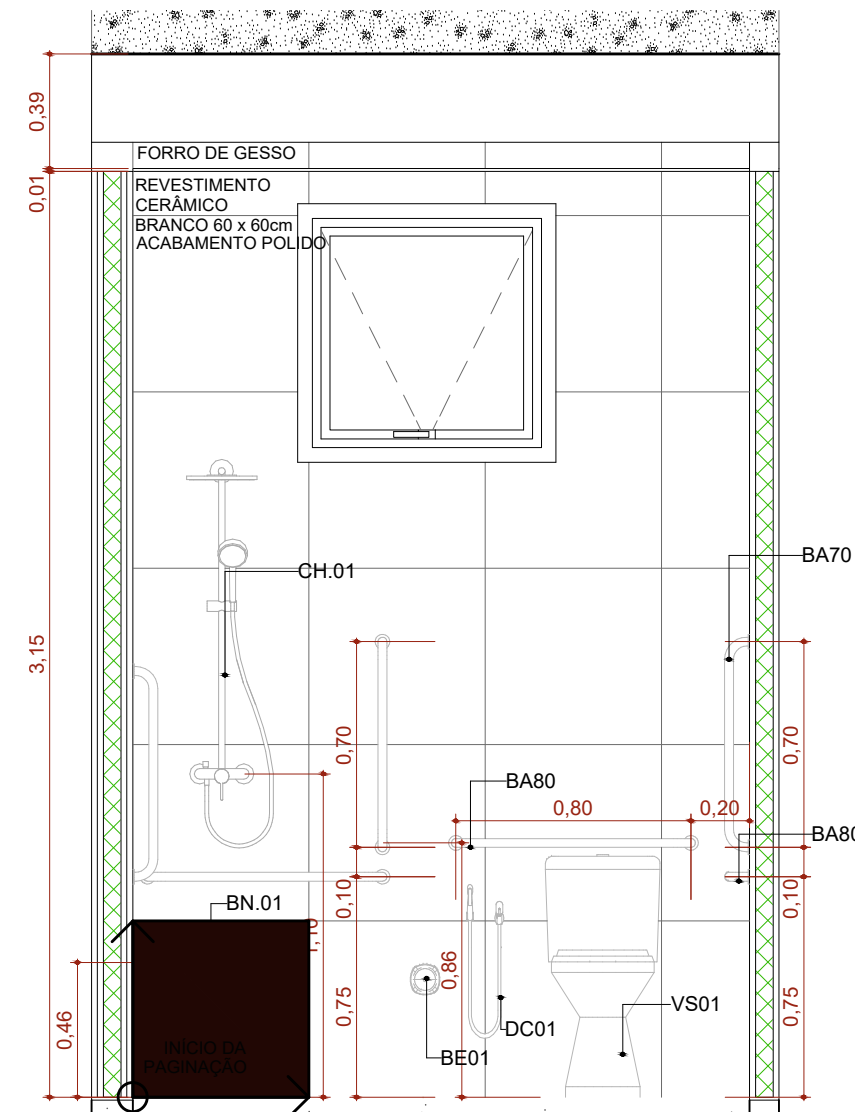
A.M.12 VISTA 01
Escala: 1:25




A.M.12 VISTA 02
Escala: 1:25



A.M.12 VISTA 03
Escala: 1:25



A.M.12 VISTA 04
Escala: 1:25

AUTORIA PROJETO EXECUTIVO ALANA GAZANIGA KLOS			REGISTRO CREA PR 2039720				
R01	09/05/2025	PADRONIZAÇÃO DAS ESQUADRIAS					
R00	17/04/2023	EMIÇÃO INICIAL					
REVISÃO	DATA	DESCRIÇÃO					
TÍTULO DO PROJETO CENTRO DE ATENÇÃO PSICOSSOCIAL I e II PROPOSTA MINISTÉRIO DA SAÚDE SECRETARIA DE ATENÇÃO ESPECIALIZADA À SAÚDE CBO 00.394.544/0108-14 ENGENHEIRO Secretaria de Atenção Primária à Saúde Esplanada dos Ministérios Bloco G Edifício Sede - Ministério da Saúde CEP 70.058-900 - Brasília- DF TÍTULO DA FASE DETALHAMENTO ÁREAS MOLHADAS 03 DESCRIÇÃO DA ETAPA PROJETO REFERENCIAL CONCEITUAL							
NOME PRONCHIA - ARQUIVO URS_FL 1.13		REVISÃO R01	UNIDADE METROS	DATA 09/01/2026	ESCALA INDICADA		
AUTORIA INTELLECTUAL MIRELA PILON PESSATTI VICTÓRIA ANGELI CAPOVILLA LEONARDO MEGATO PEREIRA DOS SANTOS DANIEL NARDELLI SANTOS				DISCIPLINA ARQUITETURA PRONCHIA 13/13			
				A 25668-2 A 247156-6 A 188774-4 A 62349-9			